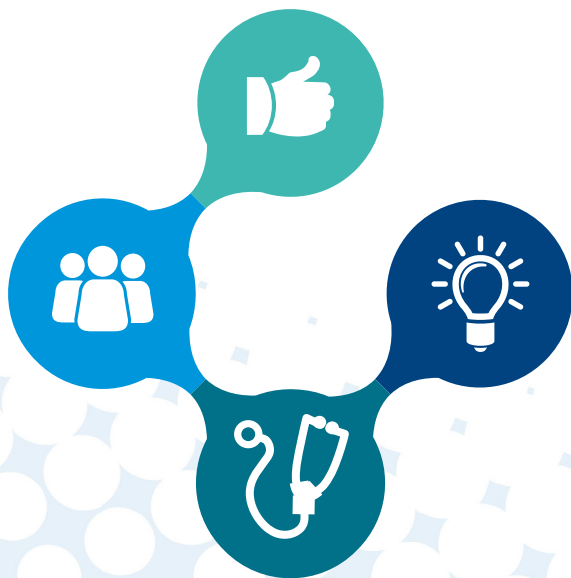


CPD Connect

Brochure and course programme 2017

Contents





CONTENTS



WELCOME TO CPD CONNECT

Welcome to CPD Connect's face-to-face workshops and learning events for April - November 2017.

CPD Connect

In April 2014, CPD delivery for GPs within NHS Education for Scotland changed, and we became a national organisation called **CPD Connect** in order to provide a unified service across Scotland, offering a wider range of resources for Scottish primary care.

What does CPD Connect offer?

- The ability to directly upload course attendance directly to SOAR if you book via the new **CPD Connect** website (see next page for more details). PBSGL logsheets can also be uploaded to SOAR by members.
- Practice Based Small Group Learning (PBSGL) membership. PBSGL is an innovative approach to CPD for GPs that originated in Canada and has grown steadily in Scotland over the last fourteen years. Over 30% of all GPs in Scotland are now involved in PBSGL and the number continues to grow by 10% each year and over recent years has extended to Practice Nurses and Pharmacists.



David Cunningham, Assistant Director of GP Education



What does CPD Connect offer? (continued...)

- Bespoke education days in various locations across Scotland, such as our upcoming **Cradle to Grave** events in Edinburgh, Aberdeen & Glasgow over the coming months. These events are unique in that they feature local Consultants and healthcare professionals delivering tailored presentations about what is new in their field of expertise. These events are completely free from commercial influence. Filming of our upcoming **Cradle to Grave** events is planned to enable the educational content to be viewed at home from PC and tablet devices for those who may be unable to attend in person, or who prefer to learn this way.
- All GPs and their teams across Scotland can attend any meeting/workshop organised by **CPD Connect**, and have access to information about what is available across Scotland.
- Offer learning, with and for, other professions such as practice nurses and pharmacists
- **CPD Connect** is developing new on-line learning modules and other interactive methods of learning.



Over 30% of all GPs in Scotland are now involved in **PBSGL**



For more information or to book a workshop please visit: www.cpdconnect.nhs.scot

CRADLE TO GRAVE EVENTS 2017

Lifelong Learning for Lifelong Care

Course Description

These courses will consist of a series of short presentations on common healthcare dilemmas from childhood to old age. All of our speakers are local GPs with Special Interests, NHS Consultants and healthcare professionals who have worked with the NES team to pinpoint key learning for their specific area of expertise.



There will be opportunities to **ask questions** and gain valuable take home **learning points** for lifelong care.

GLASGOW

Friday 12th & Sat 13th May 2017
Golden Jubilee Conference Hotel

EDINBURGH

Saturday 11th November 2017
NES offices, Westport, Edinburgh



Please see course calendar on **page 16** for pricing details



FULL DAY
WORKSHOP



HALF DAY
WORKSHOP



CRADLE
TO GRAVE



CRADLE
TO GRAVE

Learning Events

This brochure has details of our courses from **April - November 2017**.

We have a range of half day and full day events, in a number of topics, and our events have been selected to be relevant and popular for GPs and their teams and most are also useful for GPs in training (GPSTs).

PBSGL

We continue to offer a choice of learning materials and methods with our growing **Practice-Based Small Group Learning** programme. The programme has been running for 14 years now since the original pilot in 2002-2003.

Four out of five of the original pilot groups continue to meet and many groups have been running for years. There are now 2,100 group members in over 300 groups in Scotland and other areas of the UK and primary care clinicians from every health board area in Scotland are involved. In the last year we have welcomed over 200 practice nurses and 200 pharmacists and some have joined GP groups to become truly inter-professional groups.

We published 17 modules in 2016-17 and have a further 12 planned in 2017-18. Most of our modules are researched and we continue to ‘tartanise’ or adapt a few Canadian modules from our colleagues in North America. Things have turned full circle, and now our Scottish modules are being adapted and used by our Canadian cousins. We have called this process “Maple-isation”. Please visit our website for more information on how to join an existing group, or start a new group.



MODULES PUBLISHED IN 2016-17:

Scottish Modules:

- 1) Cervical Screening update
- 2) Short Cases - Less Common Infections
- 3) Less Common Cancers
- 4) Difficult Consultations
- 5) Type 2 Diabetes: Diagnosis and management of hyperglycaemia and hypoglycaemia
- 6) Type 2 Diabetes: diagnosis and treatment of complications
- 7) Diseases of the Prostate
- 8) Biochemistry Results
- 9) Short cases - Facial Problems
- 10) Resilience in Primary Care
- 11) Prescribing at the End of Life
- 12) Short Cases - Neurology

Tartanised Modules:

- 1) Childhood Obesity: Ages 2–11 Years
- 2) Acne
- 3) Post-Menopausal Symptoms
- 4) Fitness to Drive
- 5) Anxiety Disorders in Adults

Module plans for 2017/2018

Our process is that we gather suggestions for module production from you, our membership, and put these suggestions, as well potential topics relating to clinical priorities and **'hot issues'** in an annual survey each winter.

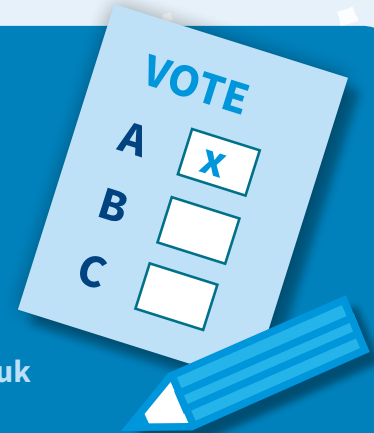
We are really grateful to the 856 of our members who responded this year and gave your top five priorities in the long list of 30 suggestions.

Based on your votes, the following modules are scheduled for production in the 2017-18 financial year (please see next page).



If you are interested in contributing to the module production process please contact our module production lead Peter McCalister at:

peter.mccalister@doctors.org.uk





Modules planned for 2017-18:

Scottish Modules:

1. Short cases: Dermatology: Diagnosis and management (may include rosacea, fungal infections, but excluding skin cancers, for which there is a module in development)
2. Short cases: Gynaecology (may include chronic pelvic pain, pelvic inflammatory disease, Polycystic Ovary Syndrome)
3. Life-threatening conditions in infants and children: recognition and management
4. Occupational Health issues relevant to Primary Care: managing the challenge of getting people back to work
5. Practicing 'Realistic Medicine: building on the challenge in the 2016 Chief Medical Officer's report (<http://www.gov.scot/Resource/0049/00492520.pdf>) to cover issues of; person-centredness; shared decision making; reducing harm, waste and unnecessary variation; and risk management
6. Short Cases: Renal problems: Diagnosis and management (may include glomerulo-nephritis, nephrotic syndrome)
7. Short Cases: Endocrinology (excluding Diabetes Mellitus for which there are existing modules). May include Thyroid disease, subclinical thyroid disease and interpreting thyroid function tests
8. Disease-modifying drugs: Indications, risks and monitoring
9. Promoting and supporting behaviour change: tools to help Primary Care practitioners and teams bring about change
10. Asthma in adults: Diagnosis and management

Modules to be updated:

1. Contraception (excluding CDP) update module
2. Employing Staff Avoiding Common Pitfalls update module

Practice Based Small Group Learning

PBSGL Administration
NHS Education for Scotland
Centre for Health Science
Old Perth Road
Inverness IV2 3JH

tel: 01463 255714 / fax: 01463 255736
e-mail: pbsgladministrator@nes.scot.nhs.uk

2017 Facilitator Training Dates:

- 25th May 2017 (Mercure Hotel, Perth)
- 30th August 2017 (NES office, Edinburgh)
- 2nd November 2017 (NES office, Glasgow)

2017 GPST Facilitator Training Dates:

- 16th March 2017 (Stirling Court Hotel, Stirling)
- 14th September 2017 (Stirling Court Hotel, Stirling)

(For GPST trainees you may need to check with your Training Supervisor to request if you can attend.)



Look out for **future dates** being announced soon!





PEER REVIEW SERVICES AT NHS EDUCATION FOR SCOTLAND (NES)

The NES approach defines peer review as the external evaluation of one element of an individual's performance by trained colleagues using a validated review instrument to facilitate developmental feedback.

Evidence of participation in independent peer review by teams and individuals is now necessary to satisfy the governance requirements of some external bodies and is an effective means of identifying learning needs and confirming good practice, e.g. as part of quality accreditation,

educational supervisor training, specialty training, professional appraisal and continuing professional development (CPD).

Although there are many types of peer review, a system of developmental review and feedback has been developed by NES. This educational approach enables clinicians, managers and healthcare teams to submit written reports of SEA and Criterion Audit for feedback from peer groups trained in the process. GPs can also submit videoed consultations for feedback under the same system.



Participation in the NES peer review system can assist GPs and practice teams with:

- Quality assured evidence for core categories in the Scottish appraisal system.
- Independent, unbiased feedback to help drive change and improvement in practice.
- Identifying learning needs and acting as a 'double-check' on standards and opportunities for rapid improvement within practice.

continued over...



PEER REVIEW SERVICES

Video Consultation Skills	Criterion Audit	SEA (Significant Event Analysis)
<p>Submitting a video for peer feedback will:</p> <ul style="list-style-type: none"> • Develop a patient centred approach to consulting • Help you cover this Quality Improvement Activity for the Scottish GP Appraisal process • Gain constructive formative feedback on your consulting style 	<p>Submitting a completed audit cycle for peer and educational feedback will:</p> <ul style="list-style-type: none"> • Help you cover this core category for the Scottish GP Appraisal process • Gain feedback on what went well and how to improve your audit 	<p>Team members who submit a significant event for in-depth, structured analysis will:</p> <ul style="list-style-type: none"> • Develop an insight into what has happened and why from constructive feedback • Focus on lessons learned and implement change to minimise risk of event repetition • Cover this core category for the Scottish Appraisal process

continued over...



PEER REVIEW SERVICES

More information on these services and how to submit peer review forms can be found at:

SEA and Audit queries to:

june.morrison@nes.scot.nhs.uk

Video Consulting Skills queries to:

Michael.Hutcheson@nes.scot.nhs.uk

I hope you will be interested in what we have to offer you. If you have any questions or comments then email me at:

david.cunningham@nes.scot.nhs.uk

CPD Connect charges the following fees for peer review activity which can be paid for by sending a cheque made payable to *NHS Education for Scotland*:

Peer review activity	Fee
Consultation Skills Video Peer Review	£150
SEA Peer Review	£50
Audit Peer Review	£50



QUOTES FROM PREVIOUS WORKSHOPS...

“ Another excellent day. The cradle to grave concept is excellent, facilitating a wide range of topics relevant to General practice.

Glasgow Cradle to Grave – May 2016 ”

“ Practical talks such as gastroenterology, geriatric and end of life ones which included information on diagnosis and management very useful.

Cradle to Grave Edinburgh - December 2016 ”

“ I can discuss mindfulness with patients with a sense of a lived experience.

Mindfulness Based Stress Reduction - September 2016 ”

“ All presentations were really practical. Lots of tips to transfer to my day to day practice. Interesting presentations

Cradle to Grave Aberdeen - March 2017 ”

“ Really good to have small group and excellent access to consultants who were all helpful and approachable both in lectures and practical sessions, more courses like this would go along way to breaking down primary/secondary care barriers.

MSK Problems inc. Joint/Soft Tissue Injections - June 2016 ”

“ ...the course was an excellent and very focussed one; speakers were hugely knowledgeable, and the feeling was of getting advice from the best sources.

Palliative Medicine - 2016 ”

“ The relationship between good leadership and patient care was well delineated in the course

The Resilient Practice - November 2016 ”



FORENSIC MEDICINE EDUCATIONAL PROGRAMME

Essentials in Sexual Offences Forensic Examination and Clinical Management
(Adults and Adolescents)



AIMS AND OBJECTIVES

This course provides an introduction to the medical, psychological, social and legal aspects of rape and sexual assault. In particular, the course focuses on an empathic victim-focussed approach to appropriate management, forensic examination, evidence collection, documentation and preparation for presentation of evidence in a Scottish court. It is aimed at General Forensic Physicians, Sexual Offences Examiners and Nurses who are providing these services within Scotland. The subjects covered are particularly relevant to clinicians preparing for either the Sexual Offences component of Membership of the Faculty of Forensic and Legal Medicine (MFFLM) or the Diploma in the Forensic and Clinical Aspects of Sexual Assault (DFCASA).

LEARNING OUTCOMES

- To acknowledge the statistics of undisclosed sexual abuse and know when and how to share information with other agencies whilst adequately considering the confidentiality of individuals who have made a disclosure.
- To understand the role of the forensic physician in: providing emergency care, minimizing the risk of future psychological sequelae by early onward referral or intervention, supporting investigating officers in gathering evidence providing appropriate documentation to support further work by lab staff on forensic samples and to allow appropriate future communication with the courts regarding cases seen.
- To have an understanding of the role of investigating police officers in investigating sex crime

continued over...



FORENSIC MEDICINE EDUCATIONAL PROGRAMME

Essentials in Sexual Offences Forensic Examination and Clinical Management (Adults and Adolescents)



- To have an understanding of the statistics for cases presenting and cases being tried, before a jury.
- To understand how the Criminal Justice System progresses from disclosure by a complainer through investigation and prosecution.
- To become versant with Sexual Offences Scotland Act 2009 and its role in protecting men, women and children who disclose sexual abuse.





CPD CONNECT CALENDAR OF COURSES

KEY:

A ABERDEEN

E EDINBURGH

G GLASGOW

For further details about our courses and to book your place please visit:

www.cpdconnect.nhs.scot

You can also find out more about becoming a member of Practice Based Small Group Learning (PBSGL)

APRIL 2017

E	Mindfulness Based Stress Reduction (MBSR) Course (8 weeks)	An 8-week mindfulness based stress reduction course for healthcare professionals delivered by experienced presenters and course materials provided.	Mr Neil Rothwell, Mindfulness Interest Group	Tuesday 4 April - Tuesday 30 May 2017 (no class on Wednesday 9 May)	19:00-21:00	102 Westport, Edinburgh	£200 for 8 weeks
A	Level 3 Child Protection	Aimed at GPs working at level 3 as per inter-collegiate and GMC guidelines. Involves multi-professional training with secondary care, social work and police colleagues. This course covers and fulfils some key Level 3 competencies regarding child protection.	NHS Grampian Child Protection Team	Tuesday 18 April 2017	12:30 - 16:30	Forest Grove House, Aberdeen	£60
E	COPD & Asthma	This course focuses on COPD and Asthma. Topics include: Persistent cough – asthma or other? Dyspnoea – case based discussion. A talk on lung cancer referrals. Community/ ambulatory management of pleural disease and Choice of anticoagulant in PE	Dr Phil Reid, Consultant Respiratory Physician and Dr Andrew Leitch, Consultant in Respiratory and Acute Medicine	Friday 28 April 2017	09:00-17:00	102 Westport, Edinburgh	£120

MAY 2017

G	Cradle to Grave	<p>This 2-day event will feature 16 short presentations from consultants and GPs with a special interest in a range of clinical and non-clinical topics affecting people from Cradle to Grave.</p> <p>One day will cost £135, with a discounted rate of £195 if both days are booked. Accommodation can be booked with the hotel directly.</p>	Dr Sarah Luty, Associate Adviser, NES	Friday 12 & Saturday 13 May 2017	09:30 - 16:30	Beardmore Hotel & Conference Centre, Clydebank	£135 / £195
---	-----------------	--	---------------------------------------	----------------------------------	---------------	--	-------------

JUNE 2017

G	MSK Problems inc. Joint & Soft Tissue Injections	<p>A full day course on MSK problems in primary care including joint and soft tissue injections. The course will include the following:</p> <p>Common MSK presentations: Orthopaedic view</p> <p>MSK in Primary Care: Rheumatology view</p> <p>Interventions: Physiotherapy view</p> <ul style="list-style-type: none"> Joint and soft tissue injections: Introduction Practical session 	Dr Nitin Ghambir, GP	Thursday 1st June 2017	09:30-16:30	2 Central Quay, Glasgow	£120
---	--	--	----------------------	------------------------	-------------	-------------------------	------

Please note that all courses are now bookable on a Pay As You Go basis via: www.cpdconnect.nhs.scot



CPD CONNECT CALENDAR OF COURSES

JUNE 2017

A	Level 3 Child Protection	Aimed at GPs working at level 3 as per inter-collegiate and GMC guidelines. Involves multi-professional training with secondary care, social work and police colleagues. This course covers and fulfils some key Level 3 competencies regarding child protection.	NHS Grampian Child Protection Team	Monday 19 June 2017	12:30-16:30	Forest Grove House, Aberdeen	£60
---	--------------------------	---	------------------------------------	---------------------	-------------	------------------------------	-----

SEPTEMBER 2017

A	Level 3 Child Protection	Aimed at GPs working at level 3 as per inter-collegiate and GMC guidelines. Involves multi-professional training with secondary care, social work and police colleagues. This course covers and fulfils some key Level 3 competencies regarding child protection.	NHS Grampian Child Protection Team	Tuesday 26 September 2017	12:30-16:30	Forest Grove House, Aberdeen	£60
---	--------------------------	---	------------------------------------	---------------------------	-------------	------------------------------	-----

OCTOBER 2017

E	Joint Injections	Understand when corticosteroid injections are appropriate, and develop hands on skills and diagnostic expertise using a range of models.	Dr Helen Harris, Consultant Rheumatologist	Friday 13 October 2017	14:00-17:00	102 Westport, Edinburgh	£60
---	------------------	--	--	------------------------	-------------	-------------------------	-----

NOVEMBER 2017

E	Mindfulness in Consultation	An Introduction – combat the stresses of the working day and focus on your own needs in this session to benefit yourself, your practice and your patients.	Dr Vee Frier, Consultant Psychologist & Dr Peter Wilkes, GP	Friday 3 November 2017	09:30 - 16:30	102 Westport, Edinburgh	£120
G	The HR Journey in General Practice	Taking you through the HR Journey starting with recruitment, looking at performance management and what to do when things don't go as planned.		7th November 2016	09:00 - 17:00	Glasgow - TBC	£120 / £80 (discount price of £150 if GP attends with Practice Manager)
E	The HR Journey in General Practice	Taking you through the HR Journey starting with recruitment, looking at performance management and what to do when things don't go as planned.		29th November 2017	09:00 - 17:00	Edinburgh - TBC	£120 / £80 (discount price of £150 if GP attends with Practice Manager)



2017

MARCH 2017 - NOVEMBER 2017

Workshops at a glance



For more information or to book a workshop please visit: www.cpdconnect.nhs.scot

Key for course locations:

- Aberdeen
- Edinburgh
- Glasgow

2017

APRIL

Workshops at a glance

Mindfulness Based Stress Reduction (MBSR) Course 4 April

Level 3 Child Protection 18 April

COPD & Asthma 28 April

For more information or to book a workshop please visit: www.cpdconnect.nhs.scot



MINDFULNESS BASED STRESS REDUCTION (MBSR) 8 WEEK COURSE



DATE	Tuesday 4th April – Tuesday 30th May (no class on Wednesday 9th May)
TIME	19:00 – 21:00
COST	£200 for 8 weeks
LOCATION	102 Westport, Edinburgh
FORMAT	Experiential
COURSE ORGANISERS	Mr Neil Rothwell
AUDIENCE	health care professionals including GPs, dentists, pharmacists and nurses of all grades

DESCRIPTION

NHS staff currently report high levels of stress at work related to increasing workloads and demands and limited resources. Mindfulness is a healthy sustainable way to manage stress. Research suggests that mindfulness has a powerful and positive effect on health and well-being across a wide range of physical and mental health conditions.

What is mindfulness?

“Mindfulness is paying attention, on purpose, in a particular way, without judgment”. (Jon Kabat-Zinn)

Paying attention can help us become aware of our stress responses and tap into our inner resources to take better care of ourselves in terms of:

- managing anxiety
- sharpening focus
- increasing productivity
- improving sleep
- relieving pain
- feeling a deeper sense of calm

continued over...

DESCRIPTION

COURSE INCLUDES

- 8 weekly 2-hour group sessions
- learning mindfulness practices such as body scan, sitting with the breath and mindful movement
- over the course of the 8 weeks' core mindfulness skills are progressively developed
- the course is experiential - based on skills development, group discussion and home-based practice
- course manual and practice CDs for home use are provided

LEARNING OUTCOMES

- Learn how to use mindfulness to manage stress
- Learn the mindfulness practices and how to apply these to your own context



LEVEL 3 CHILD PROTECTION

22

BACK

NEXT



DATE	Tuesday 18th April 2017
TIME	12:30 – 16:30
COST	£60
LOCATION	NHS Education for Scotland, Forest Grove House, Aberdeen
FORMAT	Presentation, Small Group Work and Q&A
COURSE ORGANISERS	Marianne Cochrane, Consultant Paediatrician and Lead for Child Protection and Adoption and Fostering, Royal Aberdeen Children's Hospital
AUDIENCE	GPs

DESCRIPTION

This course covers and fulfils some key level 3 competencies regarding child protection

Most care for children and young people is delivered outside the hospital setting. Safeguarding children and young people requires all general practitioners to be effective when dealing with child abuse. General Practitioners should recognise and respond to the needs of children and young people in special circumstances, through referral and joint working.

LEARNING OUTCOMES

- Learn what medical skills are involved in child protection
- Recognition of patterns of child abuse injury
- Identification of serious and urgent injuries
- Awareness of local services
- Understanding of multi-agency working in Child Protection
- Awareness of the Specialist Child Protection Team at RACH



DATE	Friday 28th April 2017
TIME	09:00 – 17:00
COST	£120
LOCATION	102 Westport, Edinburgh
FORMAT	Lecture Based
COURSE ORGANISERS	Dr David Cunningham, Assistant Director of GP Education / Sarah Luty, Associate Adviser both of NES
AUDIENCE	GPs, Practice Nurses, Pharmacists

DESCRIPTION

- This course focuses on COPD and Asthma.

Topics include:

- Persistent cough – asthma or other?
- Dyspnoea – case based discussion
- A talk on lung cancer referrals
- Community/ambulatory management of pleural disease
- Choice of anticoagulant in PE

2017

MAY

Workshops at a glance

Cradle to Grave

12 and 13 May

Key for course locations:

- Aberdeen
- Edinburgh
- Glasgow

For more information or to book a workshop please visit: www.cpdconnect.nhs.scot



DATE	Friday 12th & Saturday 13th May 2017
TIME	09:30 – 16:30
COST	£135 for 1 day / £195 for 2 days
LOCATION	Beardmore Hotel & Conference Centre, Glasgow
FORMAT	Short Presentations and Q&A
COURSE ORGANISERS	Dr David Cunningham, Assistant Director of GP Education / Sarah Luty, Associate Adviser both of NES
AUDIENCE	GPs, Practice Nurses, Pharmacists

DESCRIPTION

This will be run with a series of short presentations on common healthcare dilemmas from childhood to old age. All of our speakers are local GPs with Special Interests, NHS Consultants and other healthcare professionals who have worked with the NES team to pinpoint key learning for their specific area of expertise. There will be opportunities to ask questions and gain valuable take home learning points for lifelong care.

FRIDAY TOPICS INCLUDE:

- Assessment of Sick Child
- Wheezy Weans
- Sleep Problems in Infants and Children
- Exercise and Obesity
- Anxiety and Teenage Mental Health
- Gender Dysphoria
- Severe Mental Illness, Life Expectancy Discussion

continued over...

DESCRIPTION

SATURDAY TOPICS INCLUDE:

- Dermatology
- Degenerative Neurological Disorders
- Fitness to Drive
- Diabetes
- MSK in Older People
- Prescribing in Frailty or Multimorbid Adults
- Grief/Bereavement

2017

JUNE

Workshops at a glance

MSK Problems in Primary Care

1 June

Level 3 Child Protection

19 June

Key for course locations:

- Aberdeen
- Edinburgh
- Glasgow



MSK PROBLEMS IN PRIMARY CARE INCLUDING JOINT & SOFT TISSUE INJECTIONS



DATE	Thursday 01 June 2017
TIME	09:30 - 16:30
COST	£120
LOCATION	NES office, 2 Central Quay, Glasgow
FORMAT	Presentation and Q&A
COURSE ORGANISERS	Dr Nitin Gambhir, GP with Special Interest in Orthopaedics, NHS Greater Glasgow & Clyde
AUDIENCE	GPs

DESCRIPTION

This one day course will give an overview of common MSK presentations (Back, Shoulder, Hip, Knee etc.) in a mixed format of lectures and a practical session.

A brief outline of the day is included below:

- Common MSK presentations: Orthopaedic view
- MSK in Primary Care: Rheumatology view
- Interventions: Physiotherapy view
- Joint and soft tissue injections: Introduction
- Practical session



LEVEL 3 CHILD PROTECTION



DATE	Monday 19th June 2017
TIME	12:30 – 16:30
COST	£60
LOCATION	NHS Education for Scotland, Forest Grove House, Aberdeen
FORMAT	Presentation, Small Group Work and Q&A
COURSE ORGANISERS	Marianne Cochrane, Consultant Paediatrician and Lead for Child Protection and Adoption and Fostering, Royal Aberdeen Children's Hospital
AUDIENCE	GPs

DESCRIPTION

This course covers and fulfils some key level 3 competencies regarding child protection

Most care for children and young people is delivered outside the hospital setting. Safeguarding children and young people requires all general practitioners to be effective when dealing with child abuse. General Practitioners should recognise and respond to the needs of children and young people in special circumstances, through referral and joint working.

LEARNING OUTCOMES

- Learn what medical skills are involved in child protection
- Recognition of patterns of child abuse injury
- Identification of serious and urgent injuries
- Awareness of local services
- Understanding of multi-agency working in Child Protection
- Awareness of the Specialist Child Protection Team at RACH

2017

SEPTEMBER

Workshops at a glance

Key for course locations:

- Aberdeen
- Edinburgh
- Glasgow

Level 3 Child Protection

26 September

For more information or to book a workshop please visit: www.cpdconnect.nhs.scot



LEVEL 3 CHILD PROTECTION

31

BACK

NEXT



DATE	Tuesday 26th September 2017
TIME	12:30 – 16:30
COST	£60
LOCATION	NHS Education for Scotland, Forest Grove House, Aberdeen
FORMAT	Presentation, Small Group Work and Q&A
COURSE ORGANISERS	Marianne Cochrane, Consultant Paediatrician and Lead for Child Protection and Adoption and Fostering, Royal Aberdeen Children's Hospital
AUDIENCE	GP's

DESCRIPTION

This course covers and fulfils some key level 3 competencies regarding child protection

Most care for children and young people is delivered outside the hospital setting. Safeguarding children and young people requires all general practitioners to be effective when dealing with child abuse. General Practitioners should recognise and respond to the needs of children and young people in special circumstances, through referral and joint working.

LEARNING OUTCOMES

- Learn what medical skills are involved in child protection
- Recognition of patterns of child abuse injury
- Identification of serious and urgent injuries
- Awareness of local services
- Understanding of multi-agency working in Child Protection
- Awareness of the Specialist Child Protection Team at RACH

Key for course locations:

- Aberdeen
- Edinburgh
- Glasgow

2017

OCTOBER

Workshops at a glance

Joint Injections

13 October

For more information or to book a workshop please visit: www.cpdconnect.nhs.scot



DATE	Friday 13th October 2017
TIME	14:00 – 17:00
COST	£60
LOCATION	Westport, Edinburgh
FORMAT	Presentation and Practical Sessions
COURSE ORGANISERS	Dr Helen Harris, Consultant Rheumatologist and Lecturer
AUDIENCE	GPs

DESCRIPTION

This course is aimed at beginners and those with some joint injection experience. The session will cover the following:

- indications for corticosteroid injections - an interactive presentation
- hands on injection of a range of joints using both one to one and group formats

Ample time for questions and case discussions.

LEARNING OUTCOMES

- Understanding when corticosteroid injection is appropriate
- Being able to undertake corticosteroid injection in a range of joints
- How to diagnose different pathologies of a range of joints

2017

NOVEMBER

Workshops at a glance

Key for course locations:

- Aberdeen
- Edinburgh
- Glasgow

Mindfulness in Consultation

3 November

The HR Journey in General Practice

7 November

The HR Journey in General Practice

29 November



MINDFULNESS IN THE CONSULTATION



DATE	Friday 3rd November 2017
TIME	09:30 – 16:30
COST	£120
LOCATION	Westport, Edinburgh
FORMAT	Experiential
COURSE ORGANISERS	Dr Vee Freir, Consultant Clinical Psychologist and Dr Peter Wilkes, GP
AUDIENCE	Multidisciplinary

DESCRIPTION

This experiential day workshop is a taster designed to demonstrate how mindfulness can benefit you as an individual and be of benefit to your patients and your practice. Mindfulness is currently one of the treatments of choice for recurring depression and has been used successfully in the reduction of stress, anxiety, fatigue and psychological problems associated with adjustment to illness as well as being preventative to psychological problems.

Information will be given regarding requirements for training should you wish to take mindfulness further. We would like to emphasise that this is an experiential day and all we would ask you to bring is your curiosity and a yoga mat.

LEARNING OUTCOMES

- What patients will get from a mindfulness course
- How you could use simple mindfulness tools to help in the consulting room
- Being able to relate and communicate better with your patients



THE HR JOURNEY IN GENERAL PRACTICE



DATE	7th Nov 2017 (Glasgow) and 29th November 2017 (Edinburgh)
TIME	09:00 – 17:00
COST	GPs £120 GP Retainers/Practice Nurses/Managers: £80*
LOCATION	TBC
FORMAT	Presentations and workshops
COURSE ORGANISERS	
AUDIENCE	GPs, Practice Managers, Practice Nurses – anyone in practice with responsibility for staff management

DESCRIPTION

This one day workshop will take you through the HR Journey starting with recruitment, looking at performance management and what to do when things don't go as planned.

LEARNING OUTCOMES

- Refresh and upskill Practice Management team in a range of day to day HR matters.
- Sharing good practice.
- Understanding statutory regulations.
- Practical tips and tools to take back to your practice to help you manage people and processes.
- Giving the confidence to deal with difficult situations

* Important Information

If GPs come along with their Practice Nurse or Manager you will receive a discounted fee of £150 for the joint booking.

Please email the CPD Connect Team to make arrangements for this as the online system is unable to process this. Email: cpdconnect@nes.scot.nhs.uk



CPD CONNECT REGIONAL OFFICES

37

BACK

NEXT

Edinburgh Office

NHS Education for Scotland
Westport 102
Westport
Edinburgh
EH3 9DN
Tel: 0131 656 3200

Glasgow Office

NHS Education for Scotland
3rd Floor, 2 Central Quay
89 Hydepark Street
Glasgow
G3 8BW
Tel: 0141 223 1400/1401

Aberdeen Office

NHS Education for Scotland
Forest Grove House
Foresterhill Road
Aberdeen
AB25 2ZP
Tel: 01224 554365

Inverness Office

PBSGL Administration
NHS Education for Scotland
Centre for Health Science
Old Perth Road
Inverness
IV2 3JH
Tel: 01463 255714



For a full list of our CPD workshops and services contact CPD Connect at:

Website: www.cpdconnect.nhs.scot
Email: cpdconnect@nes.scot.nhs.uk
Twitter: [@CPDConnect](https://twitter.com/CPDConnect)
Facebook: facebook.com/cpdconnect

Don't see a workshop you are looking for?

Get in touch with CPD Connect and tell us about your CPD needs

This resource may be made available, in full or summary form, in alternative formats and community languages. Please contact us on 0131 656 3200 or email altformats@nes.scot.nhs.uk to discuss how we can best meet your requirements.



NHS Education for Scotland
Westport 102
West Port
Edinburgh
EH3 9DN
www.nes.scot.nhs.uk

© NHS Education for Scotland 2017. You can copy or reproduce the information in this document for use within NHSScotland and for non-commercial educational purposes. Use of this document for commercial purposes is permitted only with the written permission of NES.

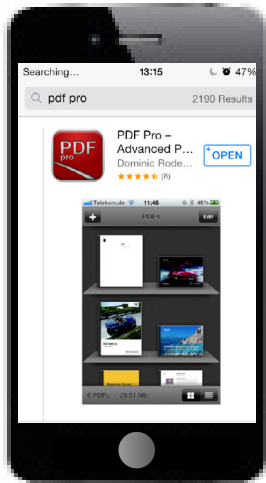


VIEWING PDFS ON MOBILE DEVICES

If you are using an iPhone or iPad to view NES PDFs you will need to download a free viewer from the app store to benefit from the full range of navigation features, including the clickable contents menus. Follow the steps below to install and use the viewer.



App Store Icon



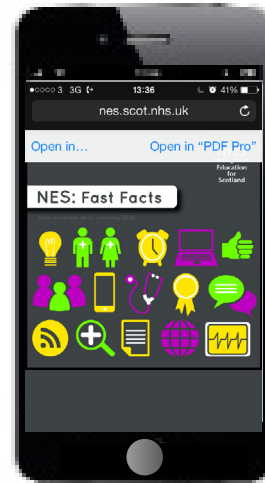
Downloading the viewer

The viewer we recommend using is PDF Pro, a free to download viewer available on the app store. To install the viewer, simply click on the App Store Icon on your home screen and then search for 'PDF Pro'.

Click on the blue box at the right hand corner which says "FREE". It will then turn green and the word will change to "INSTALL"

Click once more and the viewer will begin to download and install on your device. If you have a password set up on your device it may ask you for this now.

Please note: you will need to have



Using PDF Pro

Using the viewer is simple. Once installed it will be automatically added to the options for viewing when opening a PDF. Simply navigate to the location on the web using Safari, click on the PDF you want to view and an option will App Store Icon appear at the corner of the screen which says "Open in..."

Click on the "Open in..." option, followed by the PDF Pro icon and the PDF will launch in the viewer.

Once viewing in PDF Pro all of the navigational features will be functional, so simply tap the buttons onscreen to get started.